



Daily Commentary

by: **Arthur Ullrich**
The Trading Tutor™
 17th year of Service to Day Traders
www.TradeTutor.com



Futures Contract:
@ES E-mini S&P 500
Monday, July 26, 2010 Volume XVII

The intent of the **Daily Commentary** is to discuss the facts, technical analysis, and structure of the price action, configuration of indicators, entry signals, targets, low-risk stop placement, stop movements and exits. With repetitious exposure to a disciplined approach in this short term low-risk trading strategy, the reader should be able to understand the methodology and learn to apply it independently. The online **Lesson Series** contains much of the basis of the strategy, and the **Daily Commentary** presents a chronology of the implementation. Each day the **Commentary is explained on Video** with students present, The students ask questions and responses are recorded for all to review. The **Video Commentary** is maintained on the web site for all students. The **Pre-Market Report** is a separate report looking back on the prior trading session and applying technical analysis to establish expectations for the next session while including analysis results important for the next trading session and beyond. **All times shown are Eastern.**

"Success...seems to be connected to action. Successful people keep moving. They make mistakes but they don't quit."

5 Minute Chart

@ES Continuous Contract S&P 500. Open 1100.75, down 1 tick from Friday.

Globex Session High	1104.50
Globex Session low	1097.00
Today's open	1100.75
DJIA close yesterday	10,424

935 This Bullish trend move is already back to the 20xma. The Outside bar suggest it can go lower but I won't enter short here. 7xma is still well above the 20xma. The Stochastic turned down at 915. I think it is a little late to be entering here.. Wait.

940 Bearish Dragonfly but not a great deal lower.

945 More of a bullish Dragonfly .

955 Trade #1 Buy-Long this bullish Dragonfly at the market. Price did react to the 20xma as expected. This bar retested the 945 low before it turned up strong. Stochastic is turned up here and K is well over the D. 7xma is still above the 20xma. Notice price put in a higher low here maintaining the Bullish trend.

Trend : Bullish, Trade with the trend.

Filled at: 1100.25

Stop loss point : 1097.25 under the low bar 3 Point Risk.

Target: 1104.50 Globex Session high, Trail a stop.

Target discussion: There was another potential target at the 910 high, 1103.00. I stuck my neck out and took the next possible target.

1000 Bullish 4th Bar™ . Move Stop-loss point under at 1098.25

1005 Look at it go. Target hit and filled. Made 4.25 POINTS PER, Trailing stop 1100.25.

1015 Right at R1. Trailing stop 1104.25

1020 Doji right on R1. I bailed out as I had to take a brief break. Out at 1106.25. Made 6 points per, on the Trailing stop.

Be right back.

1050 Trade #2 Buy-Long this Bullish Fast Reversal™ at the market . Price just bounced off of the 20xma for the second time. The 7xma is still well above the 20 and price has also reacted to the Globex Session high.

Trend : Bullish , Trade with the trend.

Filled at: 1105.25

Stop loss point : 1102.75 under this bar. 2.5 Point Risk.

Target: 1107.50 Previous high . Trail a stop

1100 Move Stop-loss point under at 1104.25

1115 Move Stop-loss point under at 1104.75

1120 Target hit and filled. Made 2.25 points per, Trailing stop 1005.25

~~~~~  
1125 Possible Exhaustion bar Reversal™ . Tighten the Trailing stop under at 1106.75  
Set to reverse if triggered.

1145 Trailing stop 1107.25

1150 Trailing stop 1107.75

1200 The 20xma is so near it is not realistic to trade back to the 20xma. Trade #2 is still not Stopped out. Hold.

1210 No room to move the stop

**1220 Stopped out Trade #2 made 2.5 points per, on the Trailing stop. .**

**I will take a Lunch break here. back by 1300.**

**1300 Trade #3 Buy-Long this bullish Fast Reversal™ at the market The 7xma is right at the 20xma . Stochastic turned up and K is well over the D. Trend is still bullish. The Fast D appears very bearish divergent here. Notice that the DJIA and Breadth are still in positive territory .**

**Trend : Bullish , Trade with the trend.**

**Filled at: 1108.25**

**Stop loss point : 1106.25 under the 1255 Outside bar 2.0 Point Risk.**

**Target: 1112.25. Arbitrary 4 points. Trail a stop.**

1310 Strong Bearish Fast Reversal™ . Set stop to reverse if triggered.

1320 Headed back up.

1330 No room to move the stop

1345 Move Stop-loss point under at 1106.75.

This thing is having a hart time gaining any ground.

1410 Price turned down on this Bearish 4th Bar™ . Stochastic turned down .  
and Set stop to reverse if triggered.

**1425 Stopped out Trade #3 Lost 1.5 points per,**

**1425 Trade #4 Sell on a Stop at 1106.75 as price reversed putting in a LOWER HIGH and reversing the trend to bearish . 7xma crossed down over the 20xma . Stochastic turned down strong and K is well under the D. .**

**Trend : Bearish**

**Filled at: 1106.75**

**Stop loss point : 1109.75 above the 1400 bar. 3 Point Risk.**

**Target: 1103.75 3 points. ( Day's mid-range line ) Tg ..Trail a stop.**

At the close of this bar Move Stop-loss point over at 1109.25

Target discussion: My arbitrary target is 3 ticks under the Globex Session high. That could be a problem.

1440 Touched the Globex Session high. Don't move stop.

1445 Turned up

1450 Doji. Reset the target to 1104.50 Globex Session high. Trail a stop.

1455 Turned down . Move Stop-loss point over at 1106.75

1500 Target hit and filled. Made 2.25 points per, . Now this thing is reversing .

**1500 Trade #5 Buy-Long this Bullish Fast Reversal™ at the market after it reacted to the Globex Session high. Stochastic turned up at 1445 after touching the Over sold zone. 7xma is well below the 20xma.**

**Trend : Bearish , counter trend trade**

**Filled at: 1105.50**

**Stop loss point : 1103.75 under the 1500 bar. 2.25 Point Risk.**

**Target: 1107.00. R1, Trail a stop.**

Target discussion: I will take a more realistic target and Trail a stop. this time. The last 2 targets were too aggressive.

**1505 Target hit and filled. Made 1.5 POINTS PER, Trailing stop 1104.75**

1525 Trailing stop 1106.75

1540 Trailing stop 1107.25

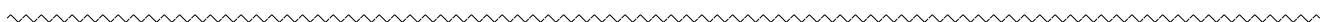
1550 Trailing stop 1109.75

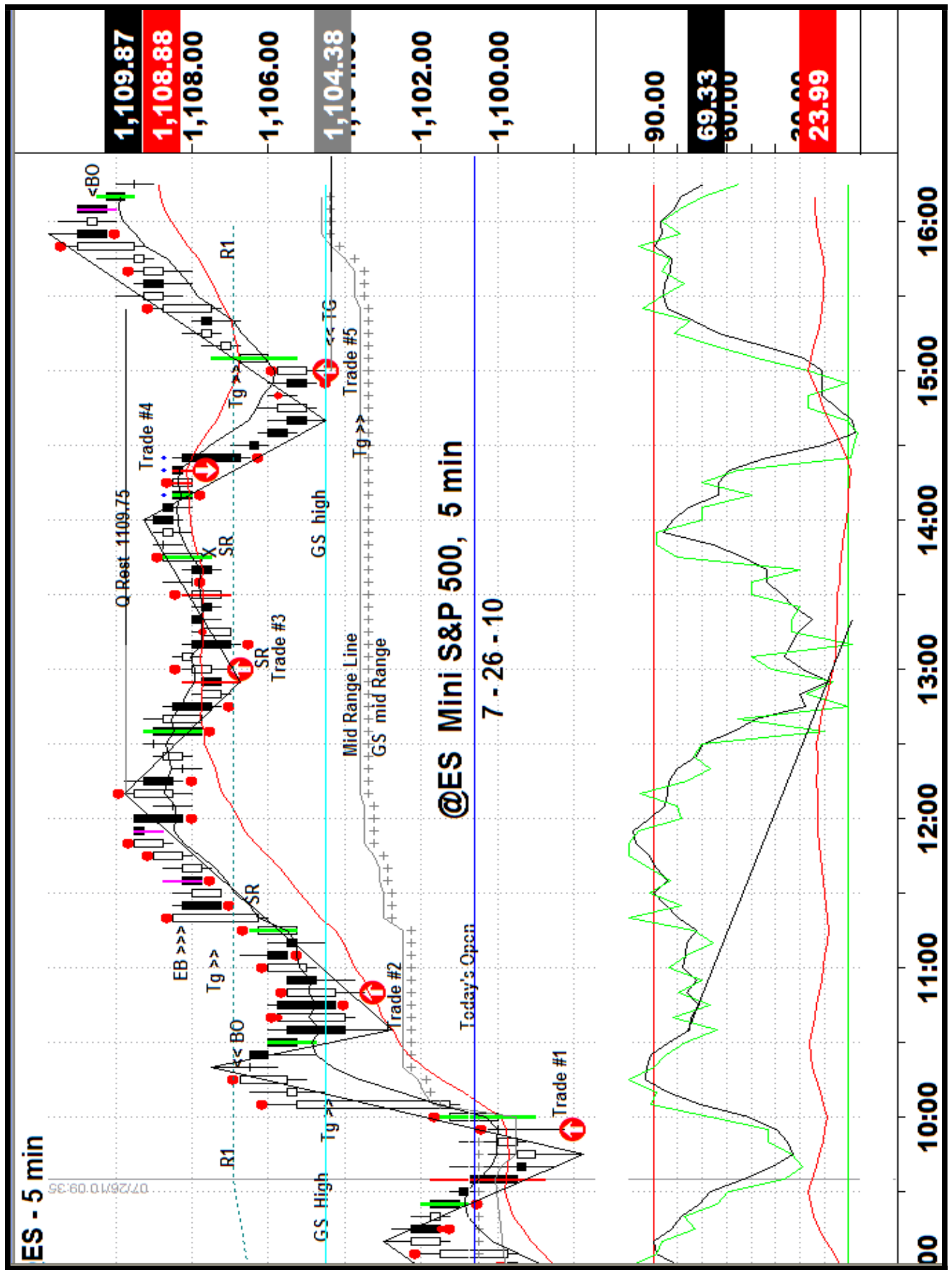
1500 Doji. This thing is turning down

**1605 Bail out at the market. Out at 1110.25. Made 4.75 POINTS PER, ON THE TRAILING STOP.**

That is it for this day. Arthur

**Please find a Video Commentary posted on the Web site about 2 hours after close.**





**Questions about this Commentary or about the Trading Tutor Services**

write: [TradeTutor@aol.com](mailto:TradeTutor@aol.com)

Or call Arthur Ullrich 909-393-1205

For Market Calendars, go to [http://www.briefing.com/print/FreeServices/fs\\_markcal.htm](http://www.briefing.com/print/FreeServices/fs_markcal.htm)

or <http://mam.econoday.com/>

or [http://www.theonlineinvestor.com/market\\_calendar.phtml](http://www.theonlineinvestor.com/market_calendar.phtml)

or [http://cbs.marketwatch.com/news/economy/economic\\_calendar.asp](http://cbs.marketwatch.com/news/economy/economic_calendar.asp)

AOL users: Go to Keyword Online Investor (OI) and see the Market Calendar.

For Fed Watch and FOMC info, go to <http://www.FederalReserve.gov>

=====

**DISCLAIMER**

Information contained in the Manual and Commentary is intended for instructional purposes only and is to explain the observations and judgment that goes into making a trade determination by the commentator regarding trades being considered for the commentator's own accounts. Such trades being considered for or executed in the commentator's own accounts may be, and often are, of different size (number of contracts) than those shown. All information is believed to be reliable but its accuracy cannot be guaranteed. As part of this course, the published materials from The Trading Tutor and its principals and participants do not constitute a recommendation that the Student should buy or sell S&P 500 Futures, or any futures, commodities or options contract. Past performance is not necessarily indicative of future results. The risk of loss is substantial in futures trading; you should therefore carefully consider whether such trading is suitable for you in light of your financial condition. You should read, understand and consider the Risk Disclosure Statement that is provided as required by the CFTC by all commodities brokers before you open a commodity trading account.

On trades shown in the Commentary there may be a risk and/or probability assessment. This assessment is a subjective evaluation of that trade based on many factors present at the time and is intended for instructional purposes only. It does not mean that the same signal will render the same risk evaluation and can not be used on future trades without a complete evaluation of all conditions at the time. Prior to entering any trade the individual trader must make and then rely on their own risk evaluation, with the understanding and in the context that all futures trades are high risk.

There are days or times when the trades and/or observations shown in the Commentary are created in retrospect (these trades are clearly so labeled). The following disclaimer is required by the CTFC and may apply: HYPOTHETICAL OR SIMULATED PERFORMANCE RESULTS HAVE CERTAIN INHERENT LIMITATIONS UNLIKE AN ACTUAL PERFORMANCE RECORD, SIMULATED RESULTS DO NOT REPRESENT ACTUAL TRADING. ALSO, SINCE THE TRADES HAVE NOT BEEN EXECUTED, THE RESULTS MAY HAVE UNDER OR OVER COMPENSATED FOR THE IMPACT, IF ANY, OF CERTAIN MARKET FACTORS, SUCH AS LACK OF LIQUIDITY. SIMULATED TRADING PROGRAMS IN GENERAL ARE ALSO SUBJECT TO THE FACT THAT THEY ARE DESIGNED WITH THE BENEFIT OF HINDSIGHT. NO REPRESENTATION IS BEING MADE THAT ANY ACCOUNT WILL OR IS LIKELY TO ACHIEVE PROFITS OR LOSSES SIMILAR TO THOSE SHOWN.

Nothing in this Course Manual or accompanying/supplementary Commentary is intended as an encouragement to trade. Only the trader can make that decision based on an informed, objective evaluation of market activity and charting characteristics. Again, the purpose of the Commentary is to explain the observations and judgment that goes into making a trade determination by the commentator regarding trades being considered for the commentator's own accounts. Because the market environment is dynamic the trader must be prepared to exercise flexibility as well as sound judgment and skill. That judgment and skill may take many months or years to develop. Because of the financial risk associated with trading the reader is advised to achieve consistent positive paper-trading and simulated trading results before assuming any financial risk inherent in actual trading in the market place. Any and all trades entered into by the Student are at the Student's total discretion and risk.

™ Trade marks are owned by Arthur H. Ullrich and the Trading Tutor L.L.C.